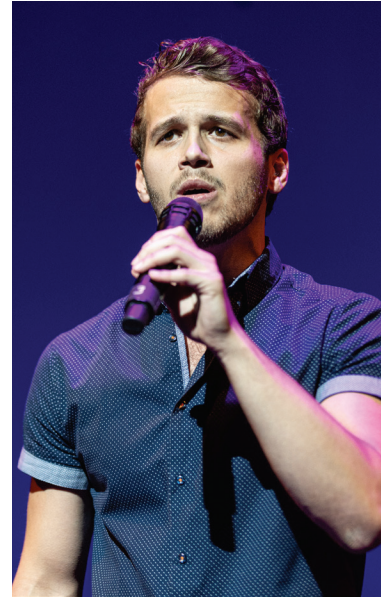


# THE TOTAL PERFORMER WORKSHOP

**FEATURING CASTING DIRECTOR  
RACHEL HOFFMAN OF TELSEY + CO**

PERFORMANCE EDGE (919) 678-9510 [www.performanceedge.net](http://www.performanceedge.net)



**DATE: SUNDAY, NOVEMBER 17TH**  
**LOCATION: RALEIGH BOYCHOIR CENTRE**  
**1329 Ridge Road, Raleigh, 27607**

This workshop will present the full scope of what the total performer really is – from start to finish – with in depth discussion and demonstration of auditioning and performing.



**Rachel Hoffman,**  
**Casting Society of America**  
**of Telsey + Company**  
*Guest Clinician*

**SESSION ONE: 9:00 AM - 11:30 AM**  
**SESSION TWO: 12:30 PM - 3:00 PM**

**Participants will perform and receive:**

- A small group session with guest clinician, Rachel Hoffman, CSA of Telsey + Company
- Individual critique and coaching
- Top recommendations and “tips” for performers and thoughts on career options in the entertainment industry
- Information on professional casting, audition techniques, song selection, musical styles, and lyric interpretation. Explore what makes you unique and marketable!
- Be prepared to sing your best 32 bars and/or perform a 1 minute monologue. Bring sheet music; accompanist is provided.
- Participants are encouraged to bring resumes, photographs, or headshots.

**Workshop is recommended for students: 5th Grade - College/Young Adult**



**Total Cost: \$75**  
*Scholarships are available.*  
**Register Online at**  
**[www.performanceedge.net](http://www.performanceedge.net)**



This project is funded in part by the City of Raleigh based on recommendations of the Raleigh Arts Commission and by the United Arts Council of Raleigh and Wake County.